

HEINE QUALITY
MADE IN GERMANY

➤ **HEINE mini3000®**

Pocket Diagnostic Instruments – now available with LED Illumination



HEINE mini 3000[®] Series – Maximum Quality, Minimum Size

The HEINE mini3000 series is the successful combination of the high quality features of full-size HEINE instruments and the convenience of pocket sized design.

HANDY AND ERGONOMIC

Compact and ergonomic design guarantees a comfortable operation for the most reliable diagnosis in any examination situation.

A QUALITY PRODUCT WITH A MODERN DESIGN

Special plastics provide maximum strength and durability in a lightweight and modern design. Maximum quality and durability with minimal dimensions.

QUALITY OPTICS AND ILLUMINATION

The interaction between high quality optics and illumination is crucial in an instrument's performance and reliability. The optics produce distortion-free and brilliant images of the whole area under examination. The illumination system renders structures and colours accurately and naturally. The mini3000 series provides the perfect balance of HEINE quality optics and illumination accuracy.

Two illumination options. One compact series of instruments without equal: HEINE mini3000[®]

HEINE LED^{HQ}: SETTING A NEW STANDARD

HEINE XHL TECHNOLOGY: STILL A MILESTONE

HEINE XHL Xenon-Halogen Technology has set the standard for the evaluation of new light technologies. It offers the perfect colour rendering that health care professionals have examined the eye with and depended

on for decades. But now there is another illumination option that meets this standard: our new LED^{HQ} technology. Now you have a choice with no compromises: tried and true XHL, or LED in HEINE Quality.

HEINE LED^{HQ}: LIGHT THAT SHOWS COLOURS AS THEY ARE

LED light sources impress with a long lifetime and energy efficiency. There is no need to ever exchange the LED. The quality of LED illumination however can vary greatly compared to XHL illumination. With exclusive HEINE LED^{HQ} technology you can enjoy all benefits of the familiar LED technology with no compromise in illumination quality. This is achieved by a high Colour Rendering Index (CRI) of 95 (red is red, blue is blue).

BRIGHT AND HOMOGENEOUS ILLUMINATION

FAITHFUL COLOUR RENDERING INDEX

Colour temperature 4,000K, Colour Rendering Index (CRI) > typically 95, special index for red colours (R9) >90 on a maximum scale of 100.

CONSISTENT LIGHT OUTPUT AND PERFORMANCE

throughout the whole working life of typ. 50,000 hours.

EFFICIENCY

Typ. 10 hours operating time.

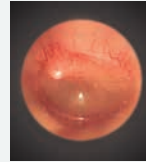


HEINE mini 3000[®] F.O. OTOSCOPE

Modern pocket otoscope, compact and powerful.

Swivelling viewing window with 3x magnification built into the instrument. Black inner instrument head.

Distal F.O. illumination. Reflex-free illumination of tympanum and ear canal.



Insufflation port for pneumatic mobility testing

XHL or LED^{HQ} illumination for true colour images and a precise diagnosis

One-hand operation of the instrument for more flexibility during examinations

Attachment clip with integrated on/off switch. Switches off automatically when returned to the pocket. 20,000 ON/OFF switch cycles guaranteed.



Two power supply options: replaceable AA batteries or rechargeable options in combination with the mini NT table charger.



▶ To upgrade to a rechargeable instrument with mini NT table charger, please see page 7.

mini3000 Otoscope with direct illumination, see page 6.



mini3000 F.O. Otoscope with LED or XHL illumination	2.5V XHL	2.5V LED
with mini3000 battery handle (incl. batteries), 5 of both 2.5 and 4 mm dia. AllSpec disposable tips	D-001.70.110	D-008.70.110

For additional ordering information, please contact your HEINE Distributor or visit us at www.heine.com

HEINE mini 3000[®] OPHTHALMOSCOPE

Compact Pocket Ophthalmoscope with best colour rendering at minimal dimensions.

Range of 18 lenses from -20D to +20D

mini3000 apertures



Fixation star, large spot, small spot, hemispherical, red-free filter

One-hand operation of the instrument for more flexibility during examinations



High-quality optics provides sharp, clear images

XHL or LED^{HQ} illumination for a brilliant image and accurate colour rendering

Attachment clip with integrated on/off switch. Switches off automatically when returned to the pocket. 20,000 ON/OFF switch cycles guaranteed.

Two power supply options: replaceable AA batteries or rechargeable option in combination with the mini NT table charger.



▶ To upgrade to a rechargeable instrument with mini NT table charger, please see page 7.



mini 3000 Ophthalmoscope with LED or XHL illumination	2.5V XHL	2.5V LED
with mini3000 battery handle (incl. batteries)	D-001.71.120	D-008.71.120

For additional ordering information, please contact your HEINE Distributor or visit us at www.heine.com

HEINE mini 3000[®] DERMATOSCOPE

Compact pocket dermatoscope with homogeneous illumination and authentic colour rendering.

High quality colour-neutral optic system with achromatic lenses provides distortion-free edge-to-edge images of the whole area under examination with 10x magnification

XHL or LED^{HQ} illumination for a brilliant image and accurate colour rendering

Attachment clip with integrated on/off switch. Switches off automatically when returned to the pocket. 20,000 ON/OFF switch cycles guaranteed.

One-hand operation of the instrument for more flexibility during examinations

Two power supply options: replaceable AA batteries or rechargeable options in combination with the mini NT table charger.

▶ To upgrade to a rechargeable instrument with mini NT table charger, please see page 7.



mini 3000 Dermatoscope with LED or XHL illumination	2.5V XHL	2.5V LED
with mini 3000 battery handle (incl. batteries) with contact plate and 10 ml dermatoscopy oil	D-001.78.107	D-008.78.107

For additional ordering information, please contact your HEINE Distributor or visit us at www.heine.com

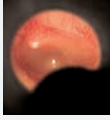


Other products of our mini3000® series:

mini3000 OTOSCOPE [01]

The most popular otoscope in our mini3000 series

- Compact otoscope with direct XHL illumination



Swivelling viewing window with 3x magnification built into instrument



Black inner instrument head

Bright and homogeneous illumination with true colour rendering

D-001.70.210

mini3000 Otoscope
with mini3000 battery handle, 5 of both 2.5 and 4mm dia. AllSpec disposable tips

mini3000 COMBI LAMP [02]

- Compact, all-purpose pocket light and tongue depressor holder all in one.
- Optimal, bright illumination for the pupillary reflex test.
- Can be used with standard wooden tongue depressors and HEINE disposable blades.

D-001.76.120

mini3000 Combi Lamp
with mini3000 battery handle (incl. batteries) with 5 disposable blades

mini3000 TONGUE-BLADE HOLDER [03]

- Tongue depressor holder with blade ejector for HEINE disposable tongue-blades.
- Optimal illumination of the oral cavity and the pharynx.
- Finger-tip pressure releases the blade. No need to touch the blade after use.
- Solid metal construction. Durable and tough.

D-001.74.118

mini3000 Tongue-Blade Holder
with mini3000 battery handle (incl. batteries) with 5 disposable blades



[08]

[03]

**mini3000 CLIP LAMP [04]/
mini-c CLIP LAMP [05]**

- Compact instrument, AA batteries [04] and very compact instrument, AAA batteries [05] for all purpose illumination.
- Optimal, bright illumination for the pupillary reflex test.
- Optional Audiology Ear Light: For the adjustment of a hearing aid, the clip lamp can be equipped with an ear light.

**EAR LIGHT
for mini3000 CLIP LAMP/
mini-c CLIP LAMP [06]**

- For otoplasty.
- The ear light is used to ensure that hearing aids fit correctly.

**mini NT TABLE CHARGER for
2 mini3000 HANDLES [07]**

- Provides stable storage of the instruments. Space saving.
- Two independent charging wells allow two mini handles to be charged at the same time.
- Quick recharge in 4 hours.
- Cannot be overcharged. Charger switches off automatically when the battery is fully charged.
- Charge Status Indicator: Light pulses from the illuminated charging wells indicating the charging mode. Continuous light indicates that the charging process has been completed.

**mini3000 RECHARGEABLE
HANDLE [08]**

- High quality handle: Unique chrome-finished upper section/refined plastic. Shockproof, sturdy, non-slip.
- Ergonomic elegant form fits well in the hand.
- Threaded connector is made of metal to prevent wear.
- Integrated on/off switch. Secure. Switches off automatically when returned to the pocket. 20,000 switch cycles guaranteed.

D-001.73.131

mini3000 Clip Lamp
with mini3000 battery handle
(incl. batteries)

D-001.73.109

mini-c Clip Lamp
(incl. batteries)

D-000.73.105

**Ear Light for mini3000 Clip
Lamp / mini-c Clip Lamp**
6 pieces in blister pack

X-001.99.484

mini NT Table Charger
single

D-001.79.022

**mini3000 Rechargeable
Handle**
with rechargeable battery
NiMH 2Z and bottom insert

mini3000 battery systems can be upgraded to a 2.5V rechargeable system with the **mini NT Charger Set** consisting of: mini NT table charger, 2 rechargeable batteries NiMH 2Z, 2 bottom inserts for mini3000 rechargeable handle

For additional ordering information, please contact your HEINE Distributor or visit us at www.heine.com

X-001.99.485



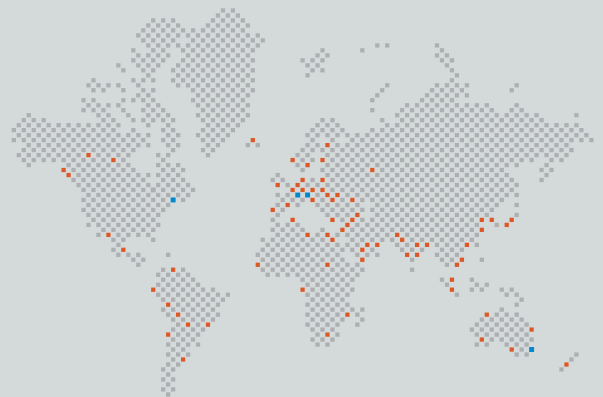
HEINE. QUALITY MADE IN GERMANY.

In 1946 our founder, Helmut A. Heine started HEINE Optotechnik with one goal in mind; to build the highest quality diagnostic instruments available in the world. It was his belief that the highest quality instruments will always best support the health care professional in making the earliest and most accurate diagnosis. For over 70 years, our customers have been able to rely on this promise, and on their HEINE instruments for precise diagnostic performance, unique functionality and long lasting durability.

Today, as a global leader in primary diagnostic instruments with over 500 employees we remain committed to our founding principles. We are still a 100 % family owned and managed company and care deeply about our employees, our customers, and the quality of our products. We continue to develop and manufacture HEINE instruments exclusively at our facilities in Germany, where we combine decades-long experience and craftsmanship with the most modern manufacturing technologies.

And we will continue to live up to our founding promise today and in the future – to support health care professionals around the world with only the highest quality diagnostic instruments.

www.heine.com



■ HEINE SUBSIDIARY COMPANIES
■ HEINE REPRESENTATIVES

GERMANY

 HEINE Optotechnik GmbH & Co. KG
Kientalstr. 7
82211 Herrsching
Tel. +49 (0) 81 52-38 0
Fax +49 (0) 81 52-3 82 02
E-Mail: info@heine.com
www.heine.com

NORTH AMERICA

HEINE USA LTD.
10 Innovation Way
Dover, NH 03820
Tel. (603) 7 42-71 03
Fax (603) 7 42-72 17
Toll Free (800) 367-4872
E-Mail: service@heine-na.com

AUSTRALIA

HEINE AUSTRALIA PTY. LTD.
Unit 9, 98 Old Pittwater Road
PO Box 7218 Warringah Mall
NSW 2100
Tel. +61 (0) 2-99 38 95 00
Fax +61 (0) 2-99 39 23 05
E-Mail: info@heine.com.au

SWITZERLAND

HEINE (Schweiz) AG
Tobeläckerstr. 9
CH-8212 Neuhausen am Rheinfall
Tel. +41 (0) 52-6 72 22 66
Fax +41 (0) 52-6 72 63 77
E-Mail: info@heineschweiz.ch

We reserve the right to change specification without notice.
© 2016 HEINE Optotechnik GmbH & Co. KG. All rights reserved.

Your distributor

02/17. A-000.00.236 e

